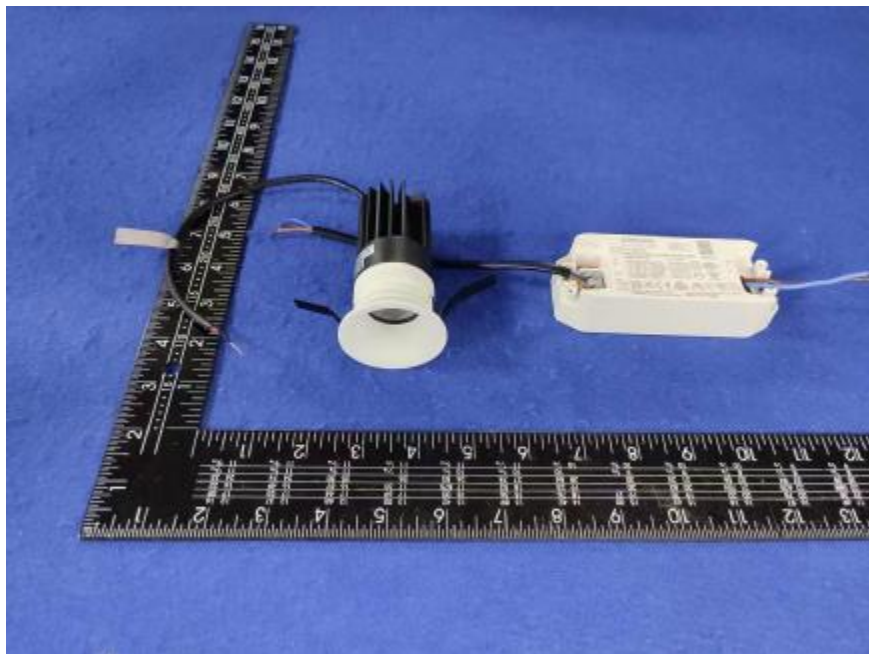


### Luminaire Photograph



Light Output Ratio:	81.1%	
Luminaire Power:	11.93 W	
SHR Nominal:	0.50	Calculated using the TM5
SHR Maximum:	0.65	fine grid method.

C Range: 0 - 360DEG  
C Interval: 30.0DEG  
Test Speed: HIGH  
Temperature: 25.3 °C  
Operators: zoe  
Test Date: 2023-6-2

γ Range: 0 - 180DEG  
γ Interval: 1.0DEG  
Test System: EVERFINE GO-SPEX500\_V1 SYSTEM V2.00.461  
Humidity: 65.0%  
Test Distance: 3.160m [K=1.0000]  
Remarks: LAMP: CMA1306-0000-000N0U0A30G Ra:90  
LENS: PM-1084B 36R  
DRIVER: 9290 028 088 250mA  
30minutes warm-up

## LUMINOUS INTENSITY DISTRIBUTION DIAGRAM

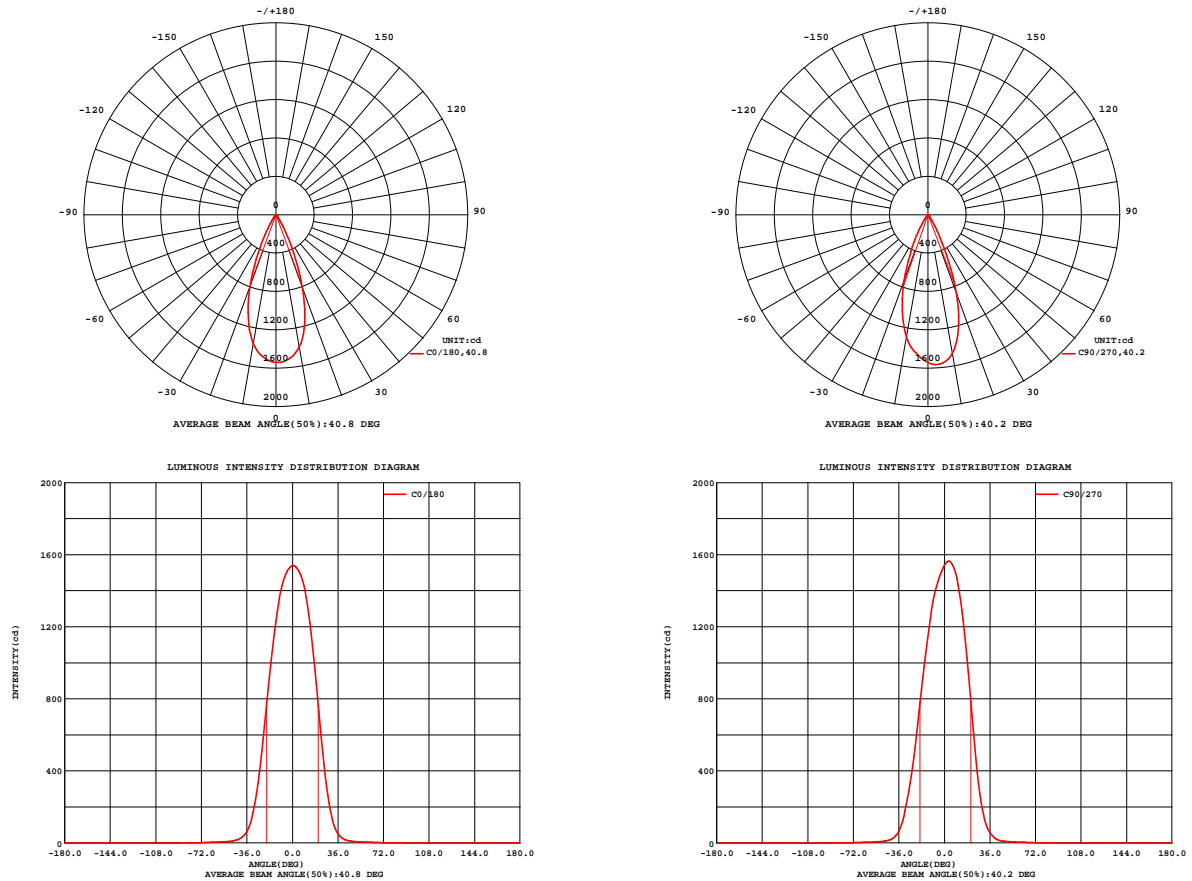


Fig. C0/C180

Fig. C90/C270

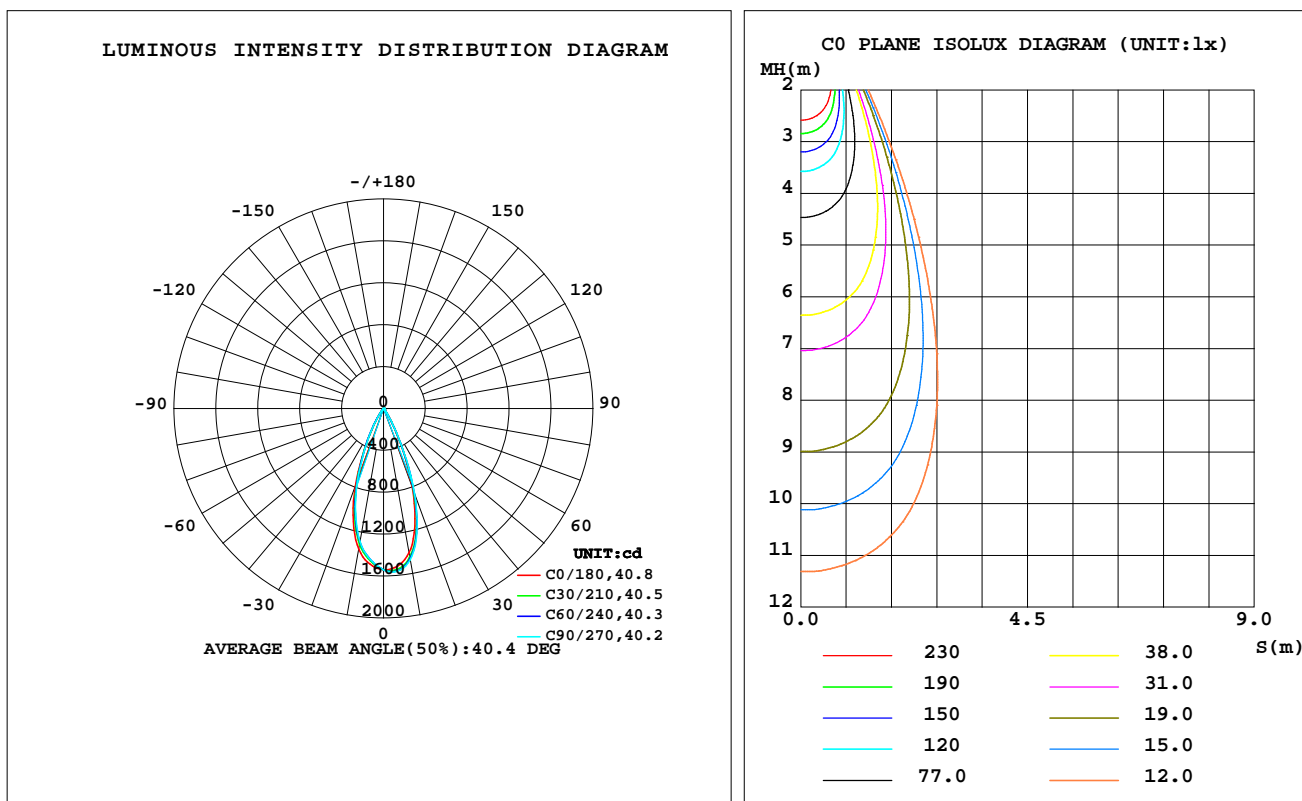
C Range: 0 - 360DEG  
C Interval: 30.0DEG  
Test Speed: HIGH  
Temperature: 25.3 °C  
Operators: zoe  
Test Date: 2023-6-2

γ Range: 0 - 180DEG  
γ Interval: 1.0DEG  
Test System: EVERFINE GO-SPEX500\_V1 SYSTEM V2.00.461  
Humidity: 65.0%  
Test Distance: 3.160m [K=1.0000]  
Remarks: LAMP: CMA1306-0000-000N0U0A30G Ra:90  
LENS: PM-1084B 36R  
DRIVER: 9290 028 088 250mA  
30minutes warm-up

## LUMINAIRE PHOTOMETRIC TEST REPORT

Test:U:220.09V I:0.0559A P:11.930W PF:0.9667 Freq:49.99Hz Lamp Flux:896.707x1 lm		
NAME: 2318.203-ACOT-97	TYPE:	WEIGHT:
SPEC.: 3000K	DIM.:	SERIAL No.: 2306020714
MFR.: RISE	SUR.: 0.000572265m2	Shielding Angle:

DATA OF LAMP		PHOTOMETRIC DATA Eff: 60.98 lm/W			
MODEL	CREE	I <sub>max</sub> (cd)	1564	S/MH(C0/180)	0.63
NOMINAL POWER(W)	12	LOR(%)	81.1	S/MH(C90/270)	0.62
RATED VOLTAGE(V)	220	TOTAL FLUX(lm)	727.43	η UP,DN(C0-180)	0.0,42.0
NOMINAL FLUX(lm)	896.707	CIE CLASS	DIRECT	η UP,DN(C180-360)	0.0,39.2
LAMPS INSIDE	1	η up(%)	0.0	CIBSE SHR NOM	0.50
TEST VOLTAGE(V)	220	η down(%)	81.1	CIBSE SHR MAX	0.65



C Range: 0 - 360DEG  
C Interval: 30.0DEG  
Test Speed: HIGH  
Temperature:25.3℃  
Operators:zoe  
Test Date:2023-6-2

γ Range: 0 - 180DEG  
γ Interval: 1.0DEG  
Test System:EVERFINE GO-SPEX500\_V1 SYSTEM V2.00.461  
Humidity:65.0%  
Test Distance:3.160m [K=1.0000]  
Remarks: LAMP:CMA1306-0000-000N0U0A30G Ra:90  
LENS: PM-1084B 36R  
DRIVER:9290 028 088 250mA  
30minutes warm-up

## ZONAL FLUX DIAGRAM

### ZONAL FLUX DIAGRAM:

$\gamma$	C0	C45	C90	C135	C180	C225	C270	C315	$\gamma$	$\Phi$ zone	$\Phi$ total	%lum,lamp
10	1401	1449	1467	1435	1364	1311	1293	1334	0- 10	139.7	139.7	19.2,15.6
20	804.8	852.6	869.4	855.5	791.4	742.8	726.6	750.0	10- 20	309.3	449.0	61.7,50.1
30	181.7	182.5	188.7	196.2	203.3	212.6	212.1	192.5	20- 30	205.0	653.9	89.9,72.9
40	24.90	25.15	27.69	30.15	31.11	30.71	29.79	26.89	30- 40	52.40	706.3	97.1,78.8
50	7.443	7.322	7.736	8.216	8.539	8.232	8.018	7.803	40- 50	11.14	717.5	98.6,80
60	4.497	4.516	4.727	4.953	5.045	4.888	4.716	4.592	50- 60	5.322	722.8	99.4,80.6
70	1.818	1.848	1.962	2.123	2.223	2.193	2.071	1.892	60- 70	3.326	726.1	99.8,81
80	0.3609	0.3688	0.4150	0.4600	0.5015	0.4884	0.4451	0.3743	70- 80	1.168	727.3	100,81.1
90	0	0	0	0	0	0	0	0	80- 90	0.1334	727.4	100,81.1
100	0	0	0	0	0	0	0	0	90-100	0	727.4	100,81.1
110	0	0	0	0	0	0	0	0	100-110	0	727.4	100,81.1
120	0	0	0	0	0	0	0	0	110-120	0	727.4	100,81.1
130	0	0	0	0	0	0	0	0	120-130	0	727.4	100,81.1
140	0	0	0	0	0	0	0	0	130-140	0	727.4	100,81.1
150	0	0	0	0	0	0	0	0	140-150	0	727.4	100,81.1
160	0	0	0	0	0	0	0	0	150-160	0	727.4	100,81.1
170	0	0	0	0	0	0	0	0	160-170	0	727.4	100,81.1
180	0	0	0	0	0	0	0	0	170-180	0	727.4	100,81.1
DEG	LUMINOUS INTENSITY:cd									UNIT:lm		

C Range: 0 - 360DEG  
C Interval: 30.0DEG  
Test Speed: HIGH  
Temperature:25.3℃  
Operators:zoe  
Test Date:2023-6-2

$\gamma$  Range: 0 - 180DEG  
 $\gamma$  Interval: 1.0DEG  
Test System:EVERFINE GO-SPEX500\_V1 SYSTEM V2.00.461  
Humidity:65.0%  
Test Distance:3.160m [K=1.0000]  
Remarks: LAMP:CMA1306-0000-000N0U0A30G Ra:90  
LENS: PM-1084B 36R  
DRIVER:9290 028 088 250mA  
30minutes warm-up

### LUMINANCE LIMITATION CURVES

Test:U:220.09V I:0.0559A P:11.930W PF:0.9667 Freq:49.99Hz  
Lamp Flux:896.707x1 lm

NAME: 2318.203-ACOT-97

TYPE:

WEIGHT:

SPEC.: 3000K

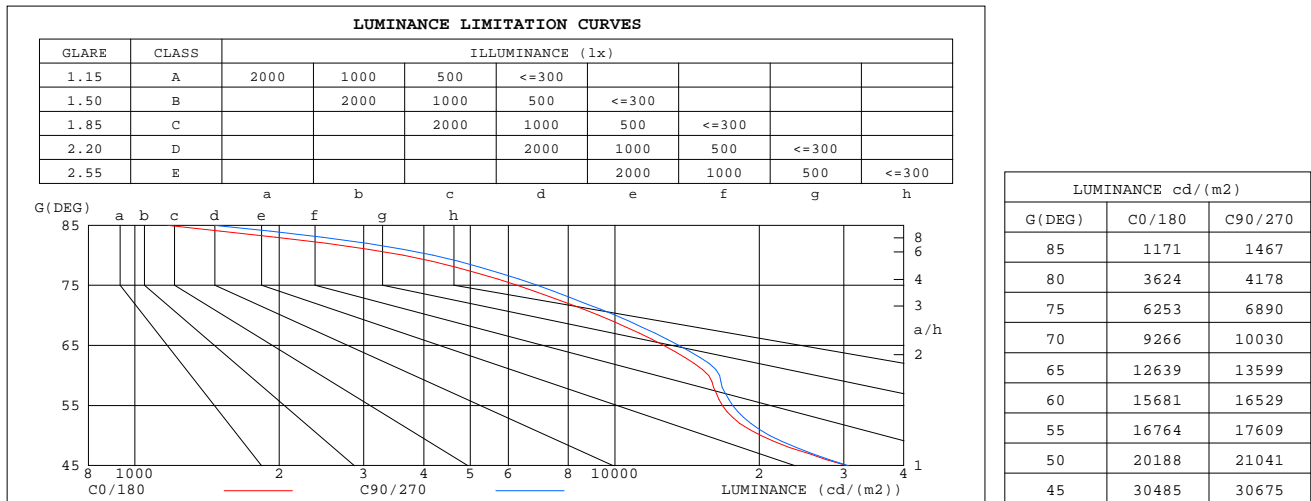
DIM.:

SERIAL No.: 2306020714

MFR.: RISE

SUR.: 0.000572265m2

Shielding Angle:



C Range: 0 - 360DEG  
C Interval: 30.0DEG  
Test Speed: HIGH  
Temperature:25.3℃  
Operators:zoe  
Test Date:2023-6-2

γ Range: 0 - 180DEG  
γ Interval: 1.0DEG  
Test System:EVERFINE GO-SPEX500\_V1 SYSTEM V2.00.461  
Humidity:65.0%  
Test Distance:3.160m [K=1.0000]  
Remarks: LAMP:CMA1306-0000-000N0U0A30G Ra:90  
LENS: PM-1084B 36R  
DRIVER:9290 028 088 250mA  
30minutes warm-up

## CU AND LUMINAIRE BUDGETARY ESTIMATE DIAGRAM

Test:U:220.09V I:0.0559A P:11.930W PF:0.9667 Freq:49.99Hz  
Lamp Flux:896.707x1 lm

NAME: 2318.203-ACOT-97

TYPE:

WEIGHT:

SPEC.: 3000K

DIM.:

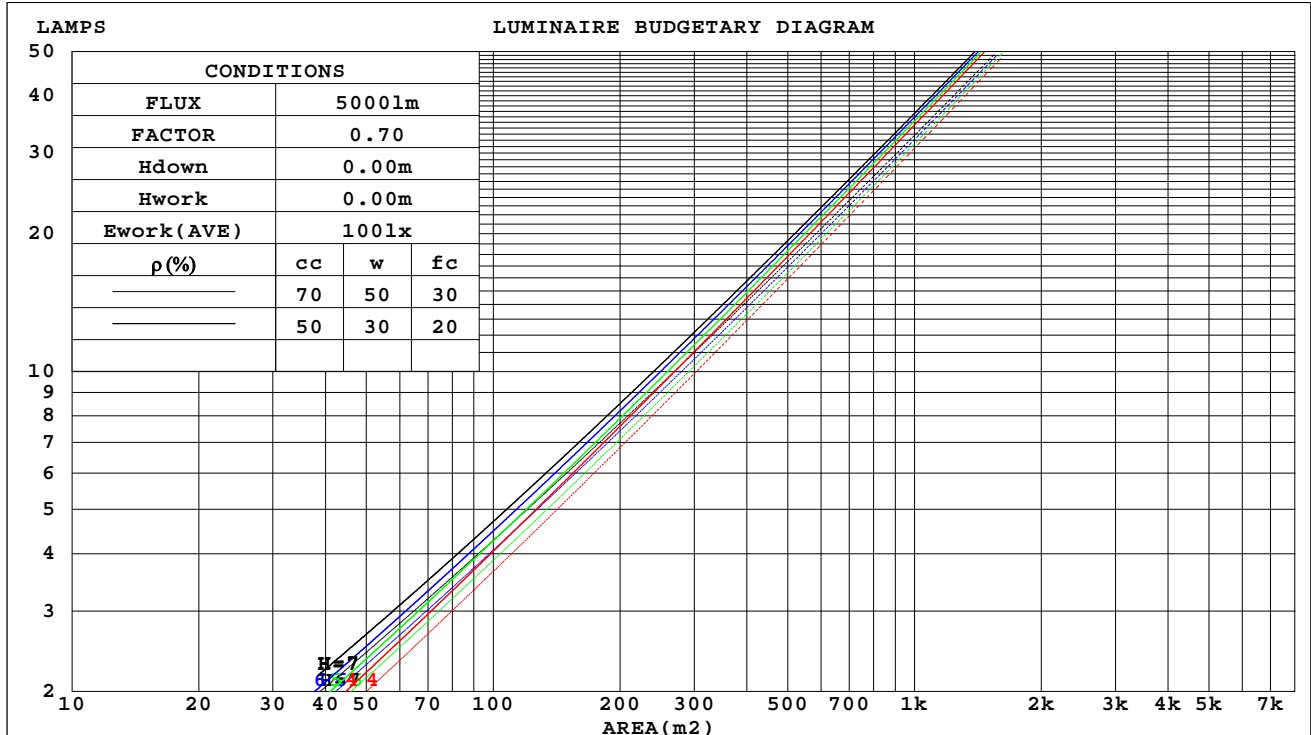
SERIAL No.: 2306020714

MFR.: RISE

SUR.: 0.000572265m2

Shielding Angle:

$\rho_{cc}$	80%			70%			50%			30%			10%			0
$\rho_w$	50%	30%	10%	50%	30%	10%	50%	30%	10%	50%	30%	10%	50%	30%	10%	0
$\rho_{fc}$	20%			20%			20%			20%			20%			0
RCR	RCR:Room Cavity Ratio															



C Range: 0 - 360DEG  
C Interval: 30.0DEG  
Test Speed: HIGH  
Temperature:25.3℃  
Operators:zoe  
Test Date:2023-6-2

$\gamma$  Range: 0 - 180DEG  
 $\gamma$  Interval: 1.0DEG  
Test System:EVERFINE GO-SPEX500\_V1 SYSTEM V2.00.461  
Humidity:65.0%  
Test Distance:3.160m [K=1.0000]  
Remarks: LAMP:CMA1306-0000-000N0U0A30G Ra:90  
LENS: PM-1084B 36R  
DRIVER:9290 028 088 250mA  
30minutes warm-up

### WEC AND CCEC

Test:U:220.09V I:0.0559A P:11.930W PF:0.9667 Freq:49.99Hz Lamp Flux:896.707x1 lm		
NAME: 2318.203-ACOT-97	TYPE:	WEIGHT:
SPEC.: 3000K	DIM.:	SERIAL No.: 2306020714
MFR.: RISE	SUR.: 0.000572265m2	Shielding Angle:

pcc	80%			70%			50%			30%			10%			0
pw	50%	30%	10%	50%	30%	10%	50%	30%	10%	50%	30%	10%	50%	30%	10%	0
pfc	20%			20%			20%			20%			20%			0
RCR	RCR:Room Cavity Ratio						Wall Exitance Coefficients(WEC)									
0.0																
1.0	.127	.072	.023	.121	.069	.022	.111	.064	.020	.102	.059	.019	.093	.054	.017	
2.0	.119	.065	.020	.115	.063	.019	.106	.059	.018	.098	.055	.017	.091	.052	.016	
3.0	.112	.060	.018	.108	.058	.017	.101	.055	.017	.095	.052	.016	.089	.049	.015	
4.0	.106	.055	.016	.103	.054	.016	.097	.051	.015	.091	.049	.015	.086	.047	.014	
5.0	.101	.051	.015	.098	.050	.015	.093	.048	.014	.088	.046	.014	.083	.044	.013	
6.0	.096	.048	.014	.093	.047	.014	.089	.046	.013	.085	.044	.013	.081	.042	.013	
7.0	.091	.045	.013	.089	.044	.013	.085	.043	.012	.082	.042	.012	.078	.041	.012	
8.0	.087	.043	.012	.086	.042	.012	.082	.041	.012	.079	.040	.012	.076	.039	.011	
9.0	.084	.041	.011	.082	.040	.011	.079	.039	.011	.076	.038	.011	.073	.037	.011	
10.0	.081	.039	.011	.079	.038	.011	.076	.037	.011	.074	.037	.010	.071	.036	.010	

pcc	80%			70%			50%			30%			10%			0
pw	50%	30%	10%	50%	30%	10%	50%	30%	10%	50%	30%	10%	50%	30%	10%	0
pfc	20%			20%			20%			20%			20%			0
RCR	RCR:Room Cavity Ratio			Ceiling Cavity Exitance Coefficients(CCEC)												
0.0	.155	.155	.155	.132	.132	.132	.090	.090	.090	.052	.052	.052	.017	.017	.017	
1.0	.138	.128	.119	.118	.110	.102	.081	.075	.071	.046	.044	.041	.015	.014	.013	
2.0	.124	.108	.094	.106	.093	.081	.073	.064	.057	.042	.037	.033	.013	.012	.011	
3.0	.113	.092	.075	.097	.079	.065	.066	.055	.046	.038	.032	.027	.012	.010	.009	
4.0	.104	.080	.062	.089	.069	.054	.061	.048	.038	.035	.028	.022	.011	.009	.007	
5.0	.096	.070	.051	.082	.061	.044	.057	.042	.031	.033	.025	.019	.011	.008	.006	
6.0	.089	.062	.043	.077	.054	.037	.053	.038	.026	.031	.022	.016	.010	.007	.005	
7.0	.083	.056	.036	.072	.048	.032	.050	.034	.023	.029	.020	.013	.009	.007	.004	
8.0	.079	.051	.031	.068	.044	.027	.047	.031	.019	.027	.018	.012	.009	.006	.004	
9.0	.074	.046	.027	.064	.040	.024	.044	.028	.017	.026	.017	.010	.008	.005	.003	
10.0	.070	.042	.024	.061	.037	.021	.042	.026	.015	.025	.015	.009	.008	.005	.003	

C Range: 0 - 360DEG  
C Interval: 30.0DEG  
Test Speed: HIGH  
Temperature:25.3℃  
Operators:zoe  
Test Date:2023-6-2

γ Range: 0 - 180DEG  
γ Interval: 1.0DEG  
Test System:EVERFINE GO-SPEX500\_V1 SYSTEM V2.00.461  
Humidity:65.0%  
Test Distance:3.160m [K=1.0000]  
Remarks: LAMP:CMA1306-0000-000N0U0A30G Ra:90  
LENS: PM-1084B 36R  
DRIVER:9290 028 088 250mA  
30minutes warm-up

UGR(Unified Glare Rating) Table

Test:U:220.09V I:0.0559A P:11.930W PF:0.9667 Freq:49.99Hz Lamp Flux:896.707x1 lm										
NAME: 2318.203-ACOT-97					TYPE:			WEIGHT:		
SPEC.: 3000K					DIM.:			SERIAL No.: 2306020714		
MFR.: RISE					SUR.: 0.000572265m2			Shielding Angle:		
ceiling/cavity	0.7	0.7	0.5	0.5	0.3	0.7	0.7	0.5	0.5	0.3
walls	0.5	0.3	0.5	0.3	0.3	0.5	0.3	0.5	0.3	0.3
working plane	0.2	0.2	0.2	0.2	0.2	0.2	0.2	0.2	0.2	0.2
Room dimensions	Viewed crosswise					Viewed endwise				
x = 2H y = 2H	17.7	18.5	17.9	18.6	18.8	18.0	18.8	18.2	18.9	19.1
3H	17.7	18.4	18.0	18.6	18.8	18.0	18.8	18.3	18.9	19.1
4H	17.7	18.4	18.0	18.6	18.8	18.0	18.7	18.3	18.9	19.1
6H	17.6	18.3	17.9	18.5	18.8	18.0	18.6	18.2	18.8	19.1
8H	17.6	18.2	17.9	18.5	18.7	17.9	18.5	18.2	18.8	19.0
12H	17.6	18.2	17.9	18.4	18.7	17.9	18.5	18.2	18.7	19.0
4H 2H	17.6	18.3	17.8	18.5	18.7	17.9	18.6	18.1	18.8	19.0
3H	17.7	18.3	18.0	18.5	18.8	18.0	18.6	18.3	18.8	19.1
4H	17.7	18.2	18.0	18.5	18.8	18.0	18.5	18.3	18.8	19.1
6H	17.6	18.1	18.0	18.4	18.8	17.9	18.4	18.3	18.7	19.1
8H	17.6	18.0	18.0	18.4	18.7	17.9	18.3	18.3	18.7	19.0
12H	17.5	17.9	17.9	18.3	18.7	17.8	18.2	18.2	18.6	19.0
8H 4H	17.6	18.0	18.0	18.4	18.7	17.9	18.3	18.3	18.7	19.0
6H	17.5	17.9	17.9	18.3	18.7	17.8	18.2	18.2	18.6	19.0
8H	17.5	17.8	17.9	18.2	18.7	17.8	18.1	18.2	18.5	19.0
12H	17.4	17.7	17.9	18.1	18.6	17.7	18.0	18.2	18.4	18.9
12H 4H	17.5	17.9	17.9	18.3	18.7	17.8	18.2	18.2	18.6	19.0
6H	17.5	17.8	17.9	18.2	18.7	17.8	18.1	18.2	18.5	18.9
8H	17.4	17.7	17.9	18.1	18.6	17.7	18.0	18.2	18.4	18.9
Variations with the observer position at spacings(CIE Pub.117):										
S = 1.0H	+ 2.5 / - 2.9					+ 2.8 / - 3.1				
1.5H	+ 4.4 / - 2.4					+ 4.8 / - 2.5				
2.0H	+ 2.1 / - 1.0					+ 1.9 / - 1.1				

CIE Pub.117, 896.7 lm Total Lamp Luminous Flux Correct (8log(F/F0) = -0.4)  
Area: 0.000572265 m2

C Range: 0 - 360DEG  
C Interval: 30.0DEG  
Test Speed: HIGH  
Temperature:25.3℃  
Operators:zoe  
Test Date:2023-6-2

γ Range: 0 - 180DEG  
γ Interval: 1.0DEG  
Test System:EVERFINE GO-SPEX500\_V1 SYSTEM V2.00.461  
Humidity:65.0%  
Test Distance:3.160m [K=1.0000]  
Remarks: LAMP:CMA1306-0000-000N0U0A30G Ra:90  
LENS: PM-1084B 36R  
DRIVER:9290 028 088 250mA  
30minutes warm-up



### UTILIZATION FACTORS TABLE

Test:U:220.09V I:0.0559A P:11.930W PF:0.9667 Freq:49.99Hz Lamp Flux:896.707x1 lm		
NAME: 2318.203-ACOT-97	TYPE:	WEIGHT:
SPEC.: 3000K	DIM.:	SERIAL No.: 2306020714
MFR.: RISE	SUR.: 0.000572265m2	Shielding Angle:

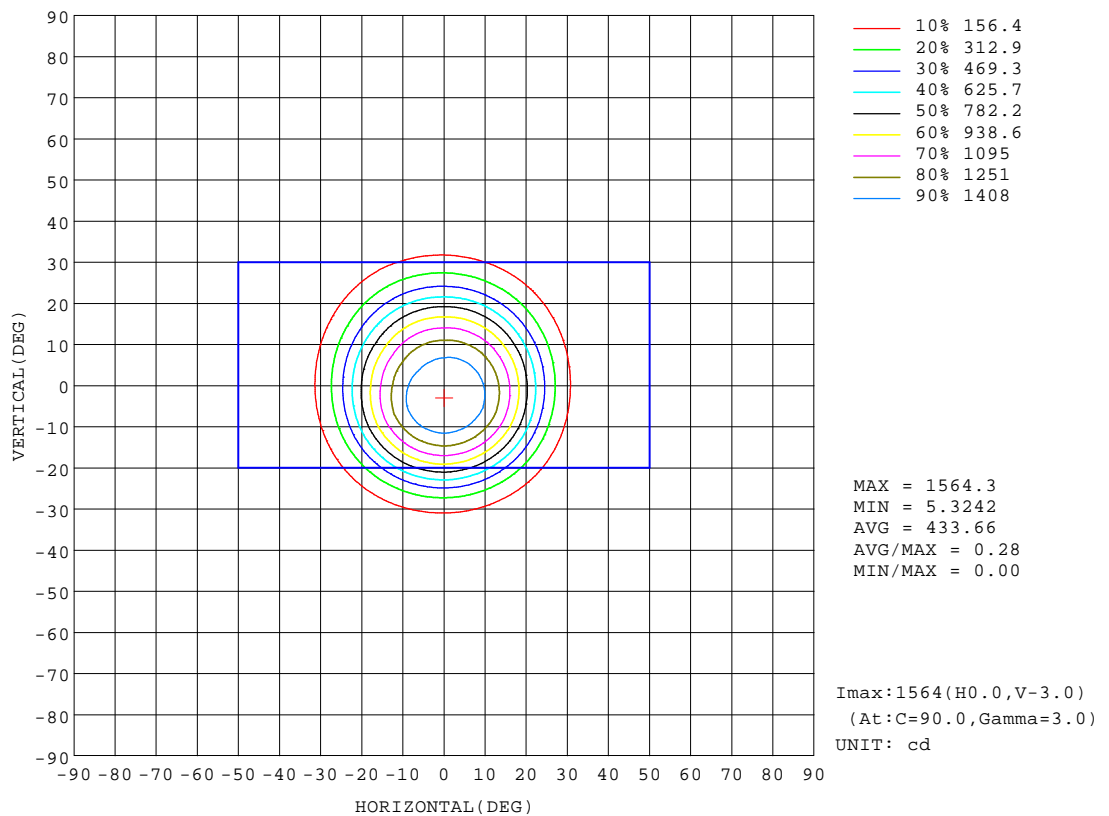
REFLECTANCE										
Ceiling	0.8	0.8	0.8	0.7	0.7	0.7	0.5	0.5	0.5	0
Walls	0.7	0.5	0.3	0.7	0.5	0.3	0.7	0.5	0.3	0
Working plane	0.2	0.2	0.2	0.2	0.2	0.2	0.2	0.2	0.2	0
ROOM INDEX	UTILIZATION FACTORS(PERCENT) $k(RI) \times RCR = 5$									
k = 0.60	73	68	65	72	68	65	72	68	65	62
0.80	79	74	71	78	74	71	77	73	71	68
1.00	82	78	75	81	77	75	80	77	74	71
1.25	85	81	78	84	80	78	82	79	77	74
1.50	87	83	81	86	83	80	84	81	79	76
2.00	89	86	83	88	85	82	85	83	81	77
2.50	90	87	85	89	86	84	86	84	83	78
3.00	91	89	86	90	87	86	87	85	84	79
4.00	93	91	89	91	89	88	88	87	86	80
5.00	94	92	91	92	91	89	89	88	87	81
ROOM INDEX	UF(total)									Direct
According to DIN EN 13032-2 2004			Suspended					SHRNOM = 1.25		

C Range: 0 - 360DEG  
C Interval: 30.0DEG  
Test Speed: HIGH  
Temperature:25.3℃  
Operators:zoe  
Test Date:2023-6-2

γ Range: 0 - 180DEG  
γ Interval: 1.0DEG  
Test System:EVERFINE GO-SPEX500\_V1 SYSTEM V2.00.461  
Humidity:65.0%  
Test Distance:3.160m [K=1.0000]  
Remarks: LAMP:CMA1306-0000-000N0U0A30G Ra:90  
LENS: PM-1084B 36R  
DRIVER:9290 028 088 250mA  
30minutes warm-up

## ISOCANDELA DIAGRAM

Test:U:220.09V I:0.0559A P:11.930W PF:0.9667 Freq:49.99Hz Lamp Flux:896.707x1 lm		
NAME: 2318.203-ACOT-97	TYPE:	WEIGHT:
SPEC.: 3000K	DIM.:	SERIAL No.: 2306020714
MFR.: RISE	SUR.: 0.000572265m2	Shielding Angle:

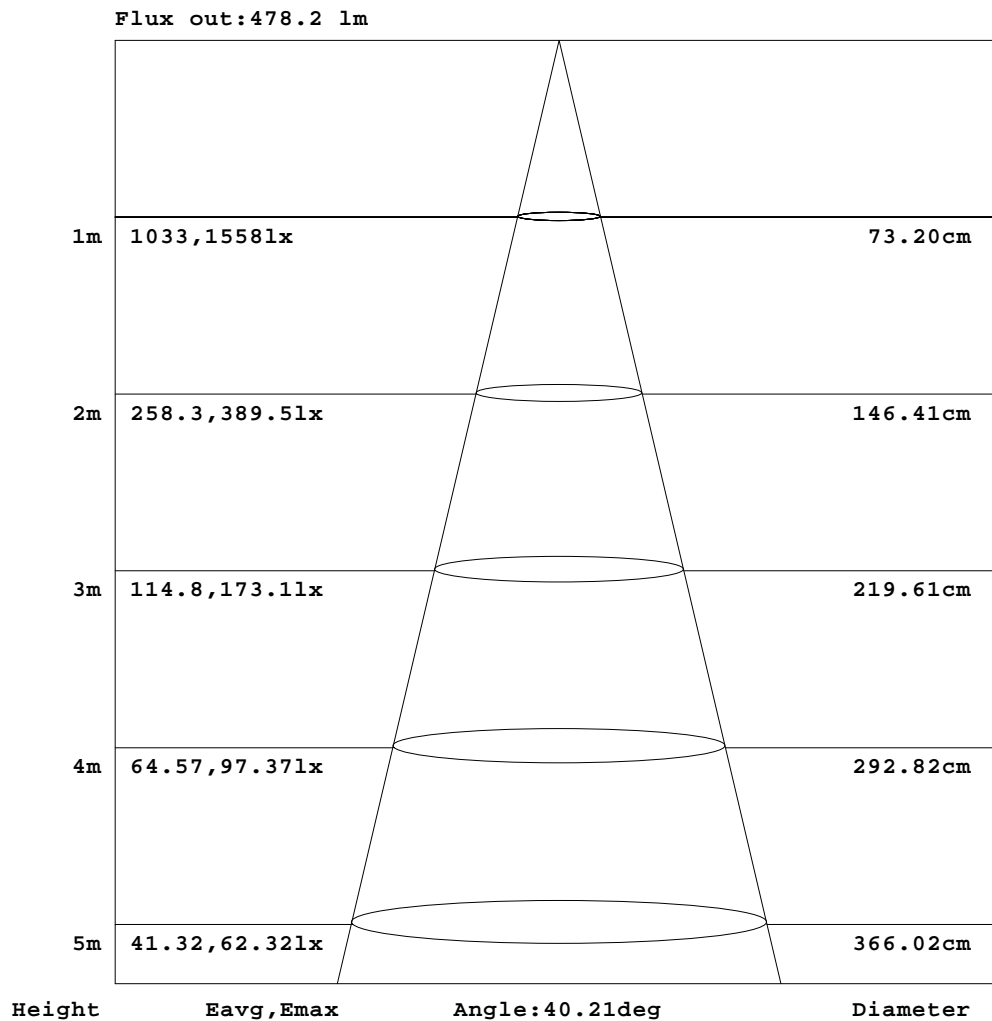


C Range: 0 - 360DEG  
C Interval: 30.0DEG  
Test Speed: HIGH  
Temperature:25.3℃  
Operators:zoe  
Test Date:2023-6-2

γ Range: 0 - 180DEG  
γ Interval: 1.0DEG  
Test System:EVERFINE GO-SPEX500\_V1 SYSTEM V2.00.461  
Humidity:65.0%  
Test Distance:3.160m [K=1.0000]  
Remarks: LAMP:CMA1306-0000-000N0U0A30G Ra:90  
LENS: PM-1084B 36R  
DRIVER:9290 028 088 250mA  
30minutes warm-up

## AAI Figure

Test:U:220.09V I:0.0559A P:11.930W PF:0.9667 Freq:49.99Hz Lamp Flux:896.707x1 lm		
NAME: 2318.203-ACOT-97	TYPE:	WEIGHT:
SPEC.: 3000K	DIM.:	SERIAL No.: 2306020714
MFR.: RISE	SUR.: 0.000572265m2	Shielding Angle:



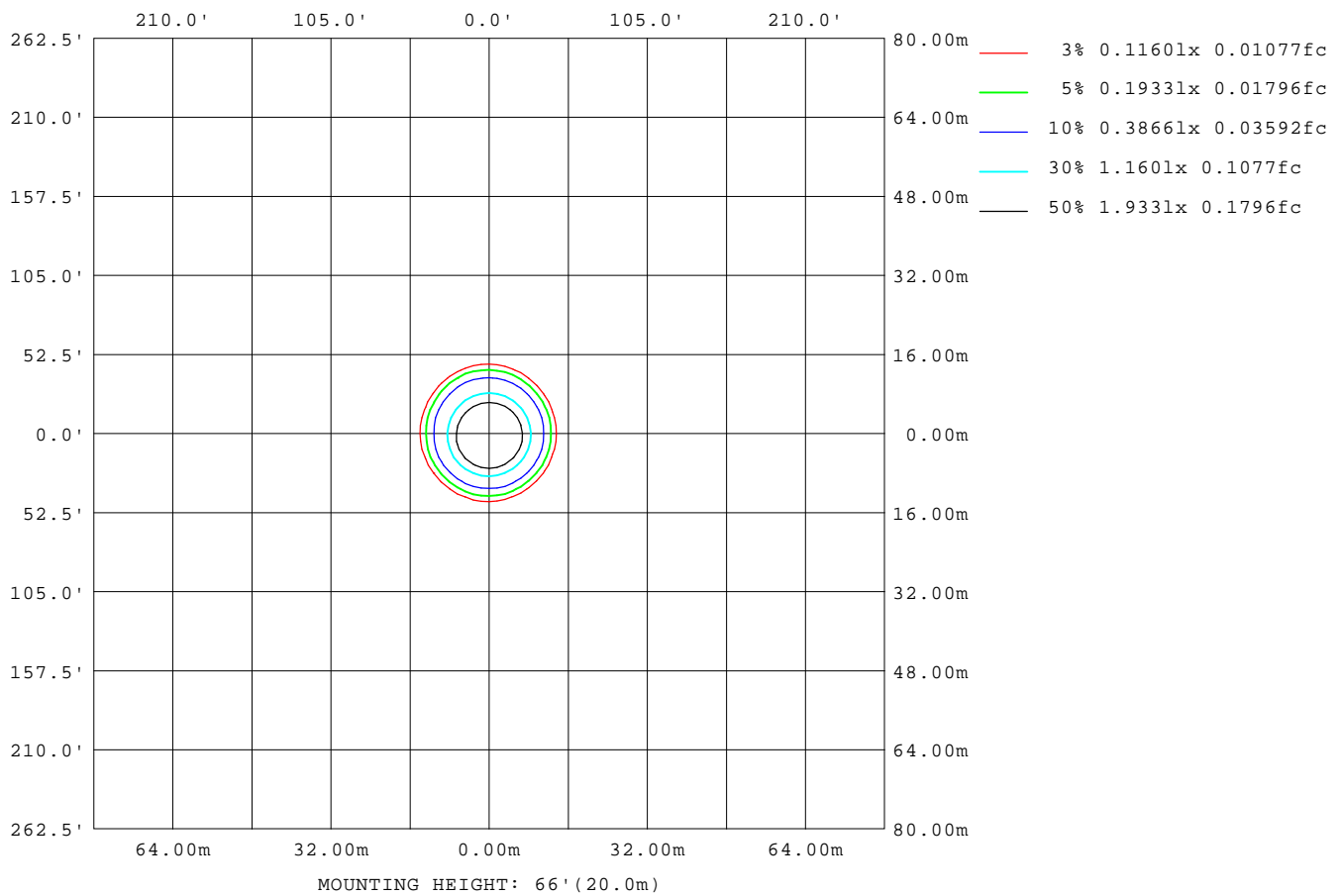
Note:The Curves indicate the illuminated area and the average illumination when the luminaire is at different distance.

C Range: 0 - 360DEG  
C Interval: 30.0DEG  
Test Speed: HIGH  
Temperature:25.3℃  
Operators:zoe  
Test Date:2023-6-2

γ Range: 0 - 180DEG  
γ Interval: 1.0DEG  
Test System:EVERFINE GO-SPEX500\_V1 SYSTEM V2.00.461  
Humidity:65.0%  
Test Distance:3.160m [K=1.0000]  
Remarks: LAMP:CMA1306-0000-000N0U0A30G Ra:90  
LENS: PM-1084B 36R  
DRIVER:9290 028 088 250mA  
30minutes warm-up

## ISOLUX DIAGRAM

Test:U:220.09V I:0.0559A P:11.930W PF:0.9667 Freq:49.99Hz Lamp Flux:896.707x1 lm		
NAME: 2318.203-ACOT-97	TYPE:	WEIGHT:
SPEC.: 3000K	DIM.:	SERIAL No.: 2306020714
MFR.: RISE	SUR.: 0.000572265m2	Shielding Angle:



C Range: 0 - 360DEG  
C Interval: 30.0DEG  
Test Speed: HIGH  
Temperature:25.3℃  
Operators:zoe  
Test Date:2023-6-2

γ Range: 0 - 180DEG  
γ Interval: 1.0DEG  
Test System:EVERFINE GO-SPEX500\_V1 SYSTEM V2.00.461  
Humidity:65.0%  
Test Distance:3.160m [K=1.0000]  
Remarks: LAMP:CMA1306-0000-000N0U0A30G Ra:90  
LENS: PM-1084B 36R  
DRIVER:9290 028 088 250mA  
30minutes warm-up

## LED Avg.L Report

Test:U:220.09V I:0.0559A P:11.930W PF:0.9667 Freq:49.99Hz Lamp Flux:896.707x1 lm		
NAME: 2318.203-ACOT-97	TYPE:	WEIGHT:
SPEC.: 3000K	DIM.:	SERIAL No.: 2306020714
MFR.: RISE	SUR.: 0.000572265m2	Shielding Angle:

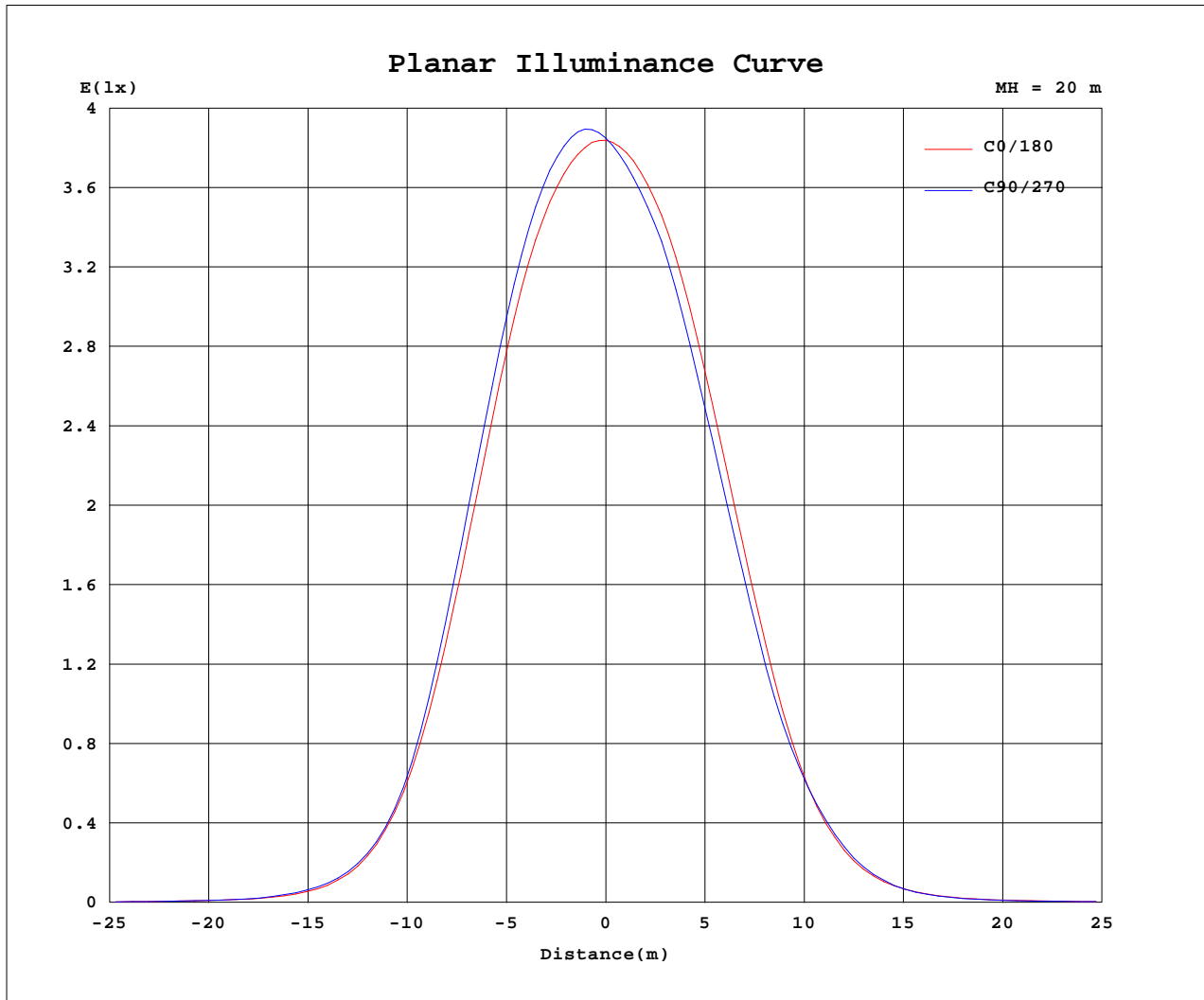
AvgL	cd/m2
L_0~180(65)av	13947
L_0~180(75)av	7110
L_0~180(85)av	1609
L_90~270(65)av	13792
L_90~270(75)av	7157
L_90~270(85)av	1449
L_45(65)av	13820
L_45(75)av	7093
L_45(85)av	1369

Standard: GB/T 29293-2012

C Range: 0 - 360DEG  
C Interval: 30.0DEG  
Test Speed: HIGH  
Temperature:25.3℃  
Operators:zoe  
Test Date:2023-6-2

γ Range: 0 - 180DEG  
γ Interval: 1.0DEG  
Test System:EVERFINE GO-SPEX500\_V1 SYSTEM V2.00.461  
Humidity:65.0%  
Test Distance:3.160m [K=1.0000]  
Remarks: LAMP:CMA1306-0000-000N0U0A30G Ra:90  
LENS: PM-1084B 36R  
DRIVER:9290 028 088 250mA  
30minutes warm-up

## Planar Illuminance Curve



C Range: 0 - 360DEG  
 C Interval: 30.0DEG  
 Test Speed: HIGH  
 Temperature: 25.3 °C  
 Operators: zoe  
 Test Date: 2023-6-2

γ Range: 0 - 180DEG  
 γ Interval: 1.0DEG  
 Test System: EVERFINE GO-SPEX500\_V1 SYSTEM V2.00.461  
 Humidity: 65.0%  
 Test Distance: 3.160m [K=1.0000]  
 Remarks: LAMP: CMA1306-0000-000N0U0A30G Ra:90  
 LENS: PM-1084B 36R  
 DRIVER: 9290 028 088 250mA  
 30minutes warm-up



## LUMINOUS DISTRIBUTION INTENSITY DATA

Test:U:220.09V I:0.0559A P:11.930W PF:0.9667 Freq:49.99Hz Lamp Flux:896.707x1 lm		
NAME: 2318.203-ACOT-97	TYPE:	WEIGHT:
SPEC.: 3000K	DIM.:	SERIAL No.: 2306020714
MFR.: RISE	SUR.: 0.000572265m2	Shielding Angle:

Table--1

UNIT: cd

C(DEG) γ (DEG)	0	30	60	90	120	150	180	210	240	270	300	330						
0	1539	1539	1539	1539	1539	1539	1539	1539	1539	1539	1539	1539						
5	1511	1541	1554	1558	1546	1526	1492	1462	1447	1448	1460	1480						
10	1401	1441	1457	1467	1453	1417	1364	1322	1299	1293	1317	1351						
15	1160	1212	1226	1233	1221	1189	1119	1068	1049	1037	1060	1099						
20	805	847	858	869	867	844	791	750	736	727	740	760						
25	436	449	454	462	465	464	445	434	433	421	418	421						
30	182	183	182	189	192	200	203	206	220	212	199	186						
35	64.4	66.0	67.4	71.8	73.8	75.5	77.8	80.4	84.4	82.6	74.3	66.6						
40	24.9	25.0	25.3	27.7	29.4	30.9	31.1	30.5	30.9	29.8	27.6	26.2						
45	12.4	11.8	11.9	12.4	13.1	14.1	14.5	14.1	14.0	13.8	13.3	13.0						
50	7.44	7.26	7.38	7.74	8.03	8.40	8.54	8.29	8.18	8.02	7.86	7.74						
55	5.51	5.48	5.56	5.78	6.01	6.13	6.13	5.99	5.86	5.74	5.69	5.61						
60	4.50	4.48	4.55	4.73	4.89	5.02	5.05	4.94	4.83	4.72	4.64	4.55						
65	3.06	3.08	3.13	3.29	3.45	3.61	3.68	3.62	3.54	3.38	3.23	3.10						
70	1.82	1.83	1.86	1.96	2.07	2.17	2.22	2.21	2.18	2.07	1.94	1.84						
75	0.93	0.94	0.96	1.02	1.08	1.14	1.18	1.17	1.17	1.10	1.01	0.94						
80	0.36	0.36	0.37	0.41	0.44	0.48	0.50	0.49	0.49	0.45	0.39	0.36						
85	0.06	0.05	0.06	0.07	0.08	0.09	0.10	0.09	0.08	0.07	0.05	0.04						
90	0.00	0.00	0.00	0.00	0.00	0.00	0.00	0.00	0.00	0.00	0.00	0.00						
95	0.00	0.00	0.00	0.00	0.00	0.00	0.00	0.00	0.00	0.00	0.00	0.00						
100	0.00	0.00	0.00	0.00	0.00	0.00	0.00	0.00	0.00	0.00	0.00	0.00						
105	0.00	0.00	0.00	0.00	0.00	0.00	0.00	0.00	0.00	0.00	0.00	0.00						
110	0.00	0.00	0.00	0.00	0.00	0.00	0.00	0.00	0.00	0.00	0.00	0.00						
115	0.00	0.00	0.00	0.00	0.00	0.00	0.00	0.00	0.00	0.00	0.00	0.00						
120	0.00	0.00	0.00	0.00	0.00	0.00	0.00	0.00	0.00	0.00	0.00	0.00						
125	0.00	0.00	0.00	0.00	0.00	0.00	0.00	0.00	0.00	0.00	0.00	0.00						
130	0.00	0.00	0.00	0.00	0.00	0.00	0.00	0.00	0.00	0.00	0.00	0.00						
135	0.00	0.00	0.00	0.00	0.00	0.00	0.00	0.00	0.00	0.00	0.00	0.00						
140	0.00	0.00	0.00	0.00	0.00	0.00	0.00	0.00	0.00	0.00	0.00	0.00						
145	0.00	0.00	0.00	0.00	0.00	0.00	0.00	0.00	0.00	0.00	0.00	0.00						
150	0.00	0.00	0.00	0.00	0.00	0.00	0.00	0.00	0.00	0.00	0.00	0.00						
155	0.00	0.00	0.00	0.00	0.00	0.00	0.00	0.00	0.00	0.00	0.00	0.00						
160	0.00	0.00	0.00	0.00	0.00	0.00	0.00	0.00	0.00	0.00	0.00	0.00						
165	0.00	0.00	0.00	0.00	0.00	0.00	0.00	0.00	0.00	0.00	0.00	0.00						
170	0.00	0.00	0.00	0.00	0.00	0.00	0.00	0.00	0.00	0.00	0.00	0.00						
175	0.00	0.00	0.00	0.00	0.00	0.00	0.00	0.00	0.00	0.00	0.00	0.00						
180	0.00	0.00	0.00	0.00	0.00	0.00	0.00	0.00	0.00	0.00	0.00	0.00						

C Range: 0 - 360DEG  
C Interval: 30.0DEG  
Test Speed: HIGH  
Temperature:25.3℃  
Operators:zoe  
Test Date:2023-6-2

γ Range: 0 - 180DEG  
γ Interval: 1.0DEG  
Test System:EVERFINE GO-SPEX500\_V1 SYSTEM V2.00.461  
Humidity:65.0%  
Test Distance:3.160m [K=1.0000]  
Remarks: LAMP:CMA1306-0000-000N0U0A30G Ra:90  
LENS: PM-1084B 36R  
DRIVER:9290 028 088 250mA  
30minutes warm-up